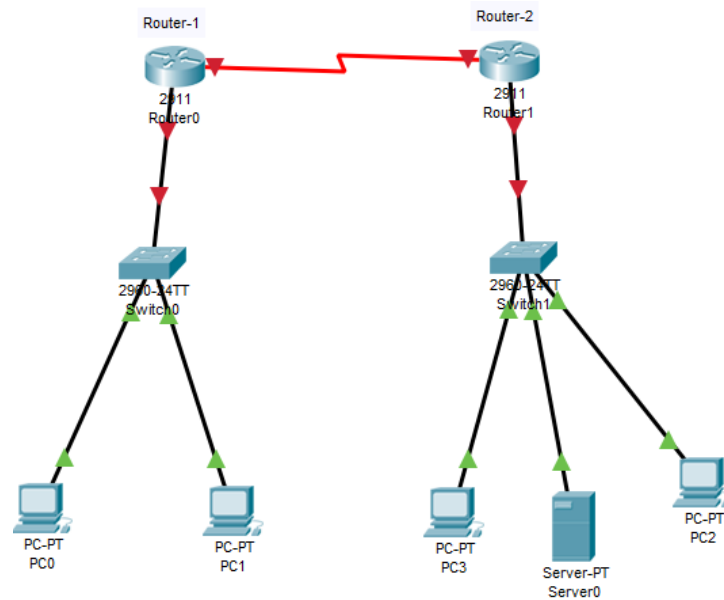


Daffodil International University
Network Security
Lab Assignment, Section-A, 173-16-219
Marks: 25 (15+10 Viva)
Deadline: April 4, 2021

Task-1: Your Company has been given you the network address **172.16.72.0/18**. After careful planning, looking at current needs and expansion, you realized you need some **subnets of 1,000 hosts** and some subnets **of 100 hosts**.

Task-2: From subnets of 100 hosts, you are requested to use two subnets for Router-1 and Router-2. From reserve, subnets you should again subnet for point-to-point links.



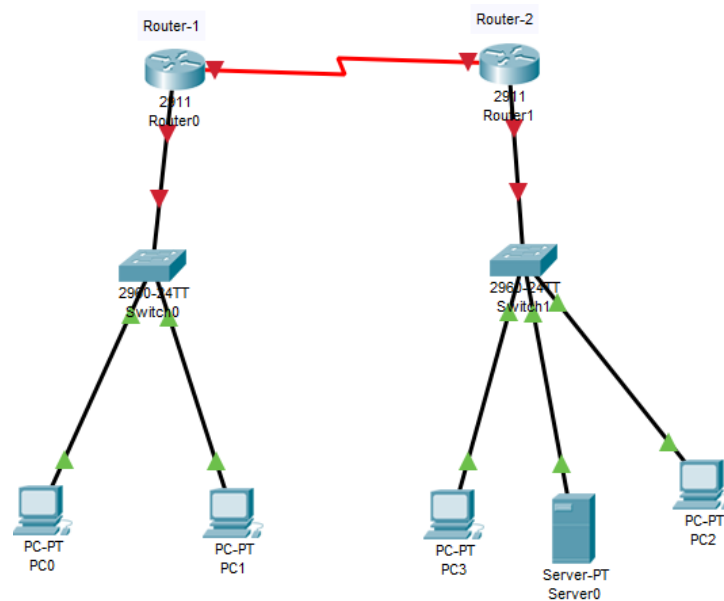
Task-3: Your Routing Protocol is Static Routing

Task-4: Need to configure NAT on Router-1 (Public IP for NAT: 100.100.200.1-100.100.200.9/28)

Daffodil International University
Network Security
Lab Assignment, Section-A, 173-16-228
Marks: 25 (15+10 Viva)
Deadline: April 4, 2021

Task-1: Your Company has been given you the network address **172.16.80.0/16**. After careful planning, looking at current needs and expansion, you realized you some **subnets of 1000 hosts** and some subnets **of 126 hosts**.

Task-2: From subnets of 126 hosts, you are requested to use two subnets for Router-1 and Router-2. From reserve, subnets you should again subnet for point-to-point links.



Task-3: Your Routing Protocol is RIPv2

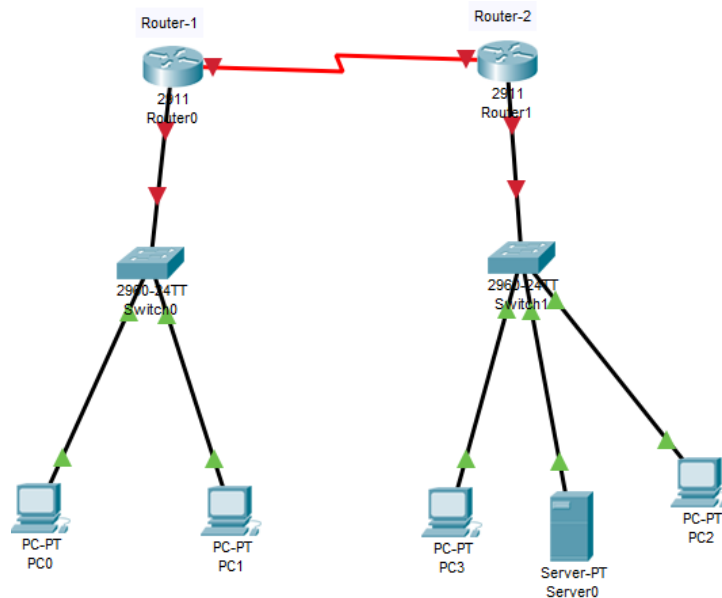
Task-4: Need to configure NAT on Router-1 (Public IP for NAT: 100.100.200.1-100.100.200.4/27)

Daffodil International University
Network Security
Lab Assignment, Section-A, 182-16-322
Marks: 25 (15+10 Viva)
Deadline: April 4, 2021

Taks-1: Your Company has been given you the network address **172.100.85.0/17**.

After careful planning, looking at current needs and expansion, you realized you need some **subnets of 1000 hosts** and some subnets **of 200 hosts**.

Task-2: From subnets of 200 hosts, you are requested to use two subnets for Router-1 and Router-2. From reserve, subnets you should again subnet for point-to-point links.



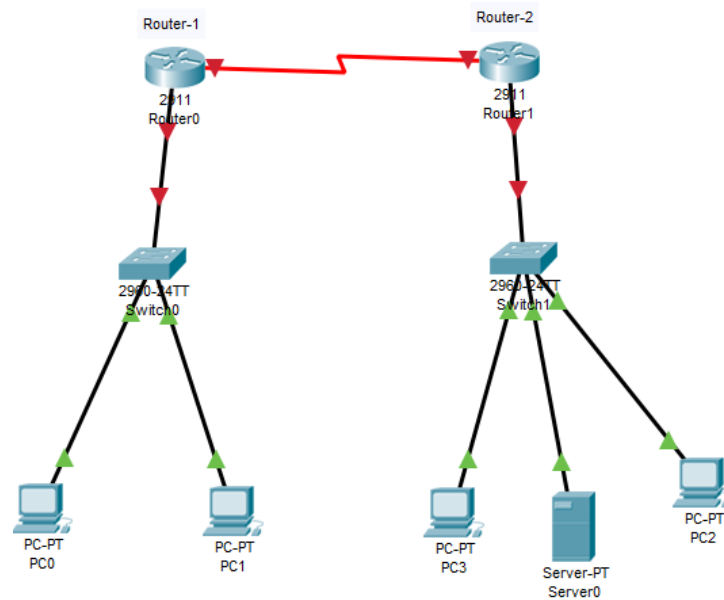
Task-3: Your Routing Protocol is Static Routing

Task-4: Need to configure PAT on Router-1 (Public IP for PAT: 100.100.200.1/30)

Daffodil International University
Network Security
Lab Assignment, Section-A, 183-16-380
Marks: 25 (15+10 Viva)
Deadline: April 4, 2021

Task-1: Your Company has been given you the network address **172.16.80.0/16**. After careful planning, looking at current needs and expansion, you realized you some **subnets of 2000 hosts** and some subnets **of 126 hosts**.

Task-2: From subnets of 126 hosts, you are requested to use two subnets for Router-1 and Router-2. From reserve, subnets you should again subnet for point-to-point links.



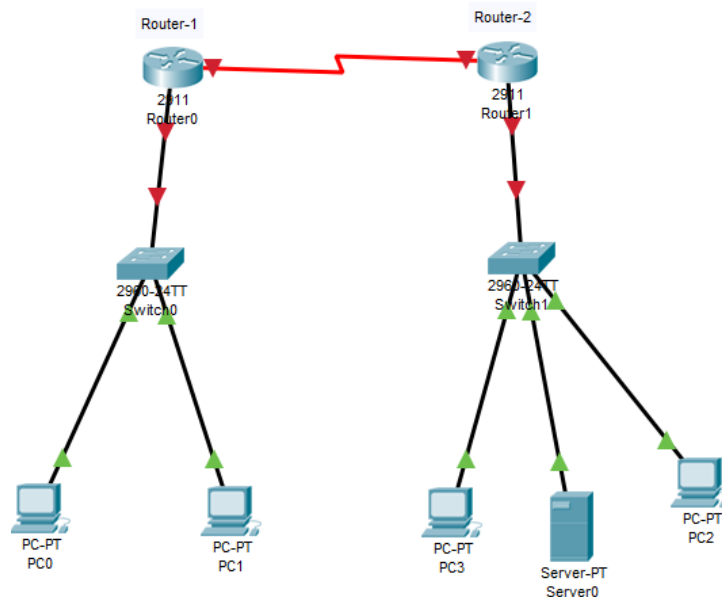
Task-3: Your Routing Protocol is EIGRP

Task-4: Need to configure NAT on Router-1 (Public IP for NAT: 200.100.200.1-200.100.200.4/27)

Daffodil International University
Network Security
Lab Assignment, Section-A, 183-16-395
Marks: 25 (15+10 Viva)
Deadline: April 4, 2021

Task-1: Your Company has been given you the network address **120.160.86.0/9**. After careful planning, looking at current needs and expansion, you realized you some **subnets of 2000 hosts** and some subnets of **250 hosts**.

Task-2: From **subnets of 250 hosts**, you are requested to use two subnets for Router-1 and Router-2. From reserve, subnets you should again subnet for point-to-point links.



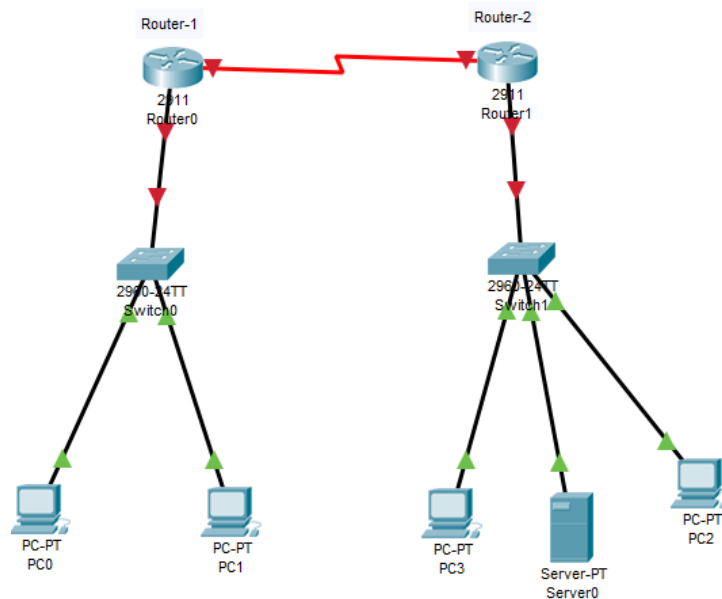
Task-3: Your Routing Protocol is OSPF

Task-4: Need to configure NAT on Router-1 (Public IP for NAT: 100.200.200.1-100.200.200.5/27)

Daffodil International University
Network Security
Lab Assignment, Section-A, 191-16-397
Marks: 25 (15+10 Viva)
Deadline: April 4, 2021

Task-1: Your Company has been given you the network address **126.116.86.0/10**. After careful planning, looking at current needs and expansion, you realized you need some **subnets of 1000 hosts** and some subnets of **126 hosts**.

Task-2: From subnets of 126 hosts, you are requested to use two subnets for Router-1 and Router-2. From reserve, subnets you should again subnet for point-to-point links.



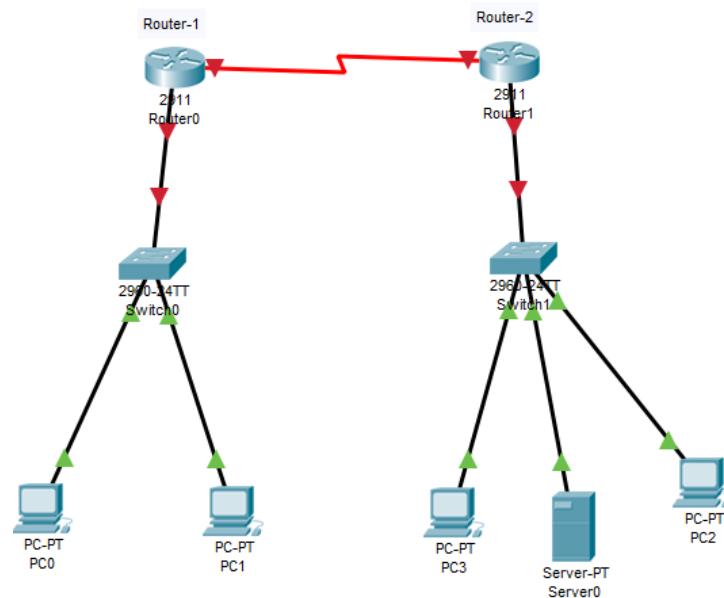
Task-3: Your Routing Protocol is Static Routing

Task-4: Need to configure PAT on Router-1 (Public IP for NAT: 203.100.200.1/30)

Daffodil International University
Network Security
Lab Assignment, Section-A, 191-16-399
Marks: 25 (15+10 Viva)
Deadline: April 4, 2021

Task-1: Your Company has been given you the network address **125.167.86.0/9**. After careful planning, looking at current needs and expansion, you realized you need some **subnets of 4000 hosts** and some subnets of **200 hosts**.

Task-2: From subnets of 200 hosts, you are requested to use two subnets for Router-1 and Router-2. From reserve, subnets you should again subnet for point-to-point links.



Task-3: Your Routing Protocol is OSPF

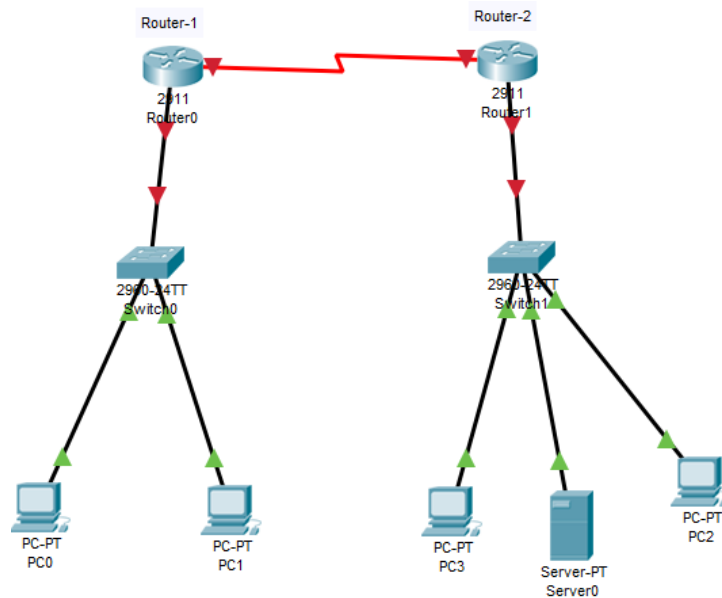
Task-4: Need to configure PAT on Router-1 (Public IP for PAT: 203.100.200.1-203.100.200.2/30)

Daffodil International University
Network Security
Lab Assignment, Section-A, ID:191-16-400
Marks: 25 (15+10 Viva)
Deadline: April 4, 2021

Taks-1: Your Company has been given you the network address **121.17.86.0/12**.

After careful planning, looking at current needs and expansion, you realized you need some **subnets of 1000 hosts and** some subnets **of 126 hosts**.

Task-2: From subnets of 126 hosts, you are requested to use two subnets for Router-1 and Router-2. From reserve, subnets you should again subnet for point-to-point links.



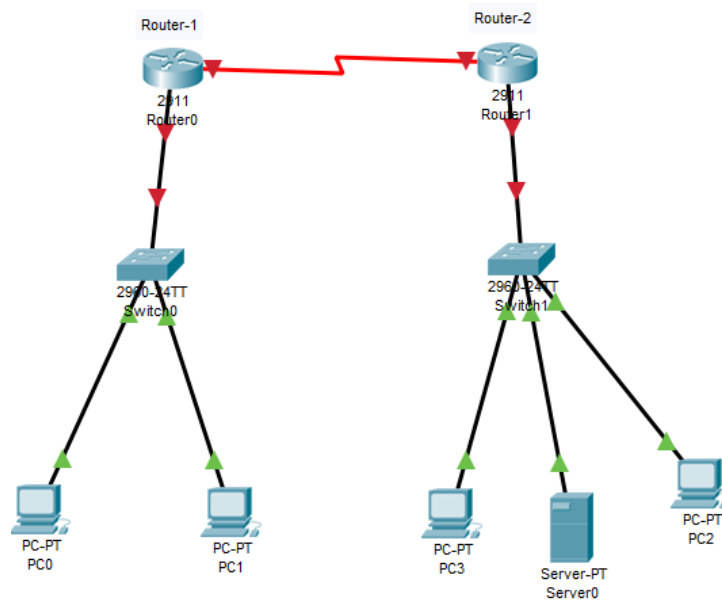
Task-3: Your Routing Protocol is Static Routing

Task-4: Need to configure NAT on Router-1 (Public IP for NAT: 190.100.200.1-190.100.200.4/27)

Daffodil International University
Network Security
Lab Assignment, Section-A, 191-16-402
Marks: 25 (15+10 Viva)
Deadline: April 4, 2021

Task-1: Your Company has been given you the network address **122.171.86.0/13**. After careful planning, looking at current needs and expansion, you realized you need some **subnets of 2000 hosts** and some subnets of **130 hosts**.

Task-2: From subnets of 130 hosts, you are requested to use two subnets for Router-1 and Router-2. From reserve, subnets you should again subnet for point-to-point links.



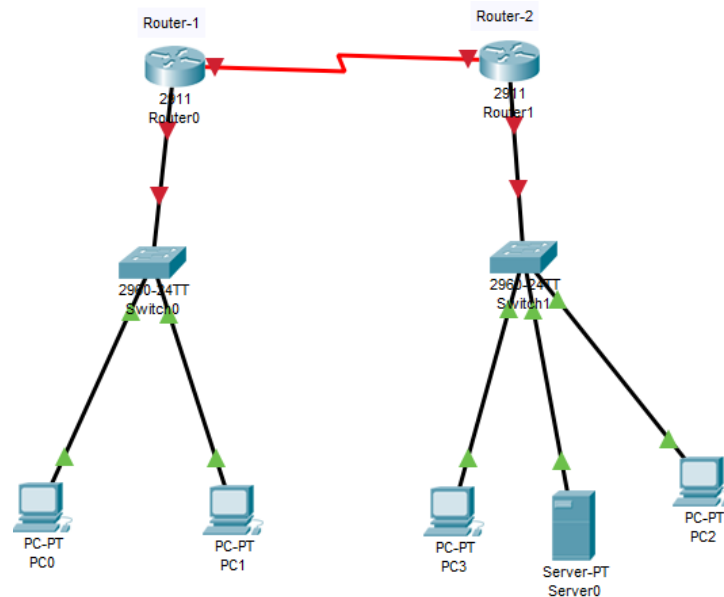
Task-3: Your Routing Protocol is OSPF

Task-4: Need to configure NAT on Router-1 (Public IP for NAT: 101.100.200.1-101.100.200.4/27)

Daffodil International University
Network Security
Lab Assignment, Section-A
191-16-403
Marks: 25 (15+10 Viva)
Deadline: April 4, 2021

Task-1: Your Company has been given you the network address **123.180.86.0/14**. After careful planning, looking at current needs and expansion, you realized you some **subnets of 1000 hosts and some subnets of 250 hosts**.

Task-2: From subnets of 250 hosts, you are requested to use two subnets for Router-1 and Router-2. From reserve, subnets you should again subnet for point-to-point links.



Task-3: Your Routing Protocol is RIPv2

Task-4: Need to configure NAT on Router-1 (Public IP for NAT: 200.200.200.1-200.200.200.2/30)

Daffodil International University

Network Security

Assignment, Section-A

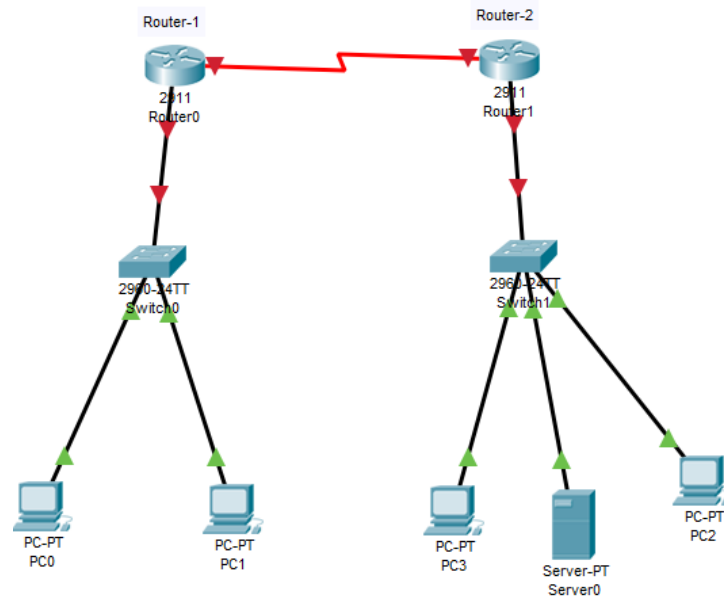
191-16-405

Marks: 25 (15+10 Viva)

Deadline: April 4, 2021

Task-1: Your Company has been given you the network address **172.16.80.0/16**. After careful planning, looking at current needs and expansion, you realized you need some **subnets of 2000 hosts and** some subnets **of 126 hosts**.

Task-2: From subnets of 126 hosts, you are requested to use two subnets for Router-1 and Router-2. From reserve, subnets you should again subnet for point-to-point links.



Task-3: Your Routing Protocol is EIGRP

Task-4: Need to configure NAT on Router-1 (Public IP for NAT: 100.100.200.1-100.100.200.4/28)

Daffodil International University

Network Security

Lab Assignment, Section-A

191-16-406

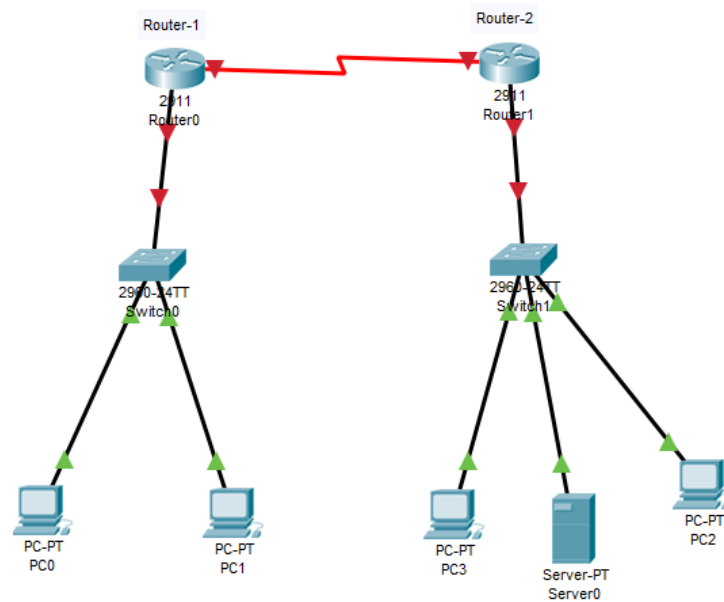
Marks: 25 (15+10 Viva)

Deadline: April 4, 2021

Task-1: Your Company has been given you the network address **119.116.86.0/9**.

After careful planning, looking at current needs and expansion, you realized you need some **subnets of 4000 hosts and** some subnets **of 250 hosts**.

Task-2: From subnets of 250 hosts, you are requested to use two subnets for Router-1 and Router-2. From reserve, subnets you should again subnet for point-to-point links.



Task-3: Your Routing Protocol is RIPv2

Task-4: Need to configure NAT on Router-1 (Public IP for NAT: 100.100.200.1-100.100.200.2/30)

Daffodil International University

Network Security

Lab Assignment, Section-A

191-16-407

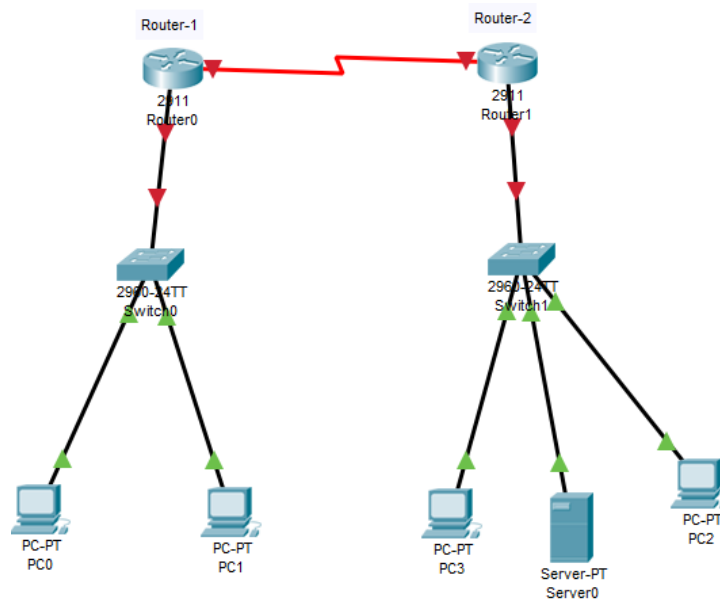
Marks: 25 (15+10 Viva)

Deadline: April 4, 2021

Task-1: Your Company has been given you the network address **112.155.80.0/10**.

After careful planning, looking at current needs and expansion, you realized you need some **subnets of 2500 hosts and** some subnets of **252 hosts**.

Task-2: From subnets of 252 hosts, you are requested to use two subnets for Router-1 and Router-2. From reserve, subnets you should again subnet for point-to-point links.



Task-3: Your Routing Protocol is RIPv2

Task-4: Need to configure NAT on Router-1 (Public IP for NAT: 100.100.200.1-100.100.200.4/28)

Daffodil International University

Network Security

Lab Assignment, Section-A

191-16-408

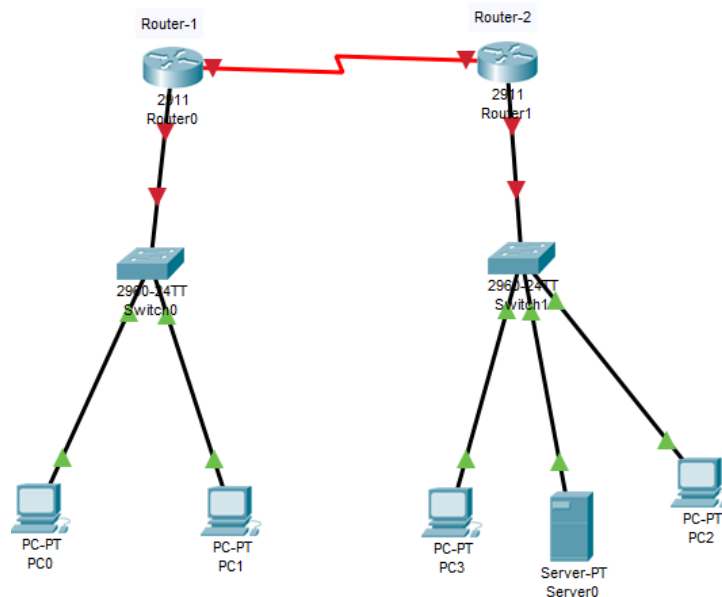
Marks: 25 (15+10 Viva)

Deadline: April 4, 2021

Task-1: Your Company has been given you the network address **113.160.180.0/8**.

After careful planning, looking at current needs and expansion, you realized you need some **subnets of 5000 hosts and** some subnets **of 250 hosts**.

Task-2: From subnets of 250 hosts, you are requested to use two subnets for Router-1 and Router-2. From reserve, subnets you should again subnet for point-to-point links.



Task-3: Your Routing Protocol is OSPF

Task-4: Need to configure PAT on Router-1 (Public IP for PAT: 100.100.200.1-100.100.200.2/30)

Daffodil International University

Network Security

Lab Assignment, Section-A

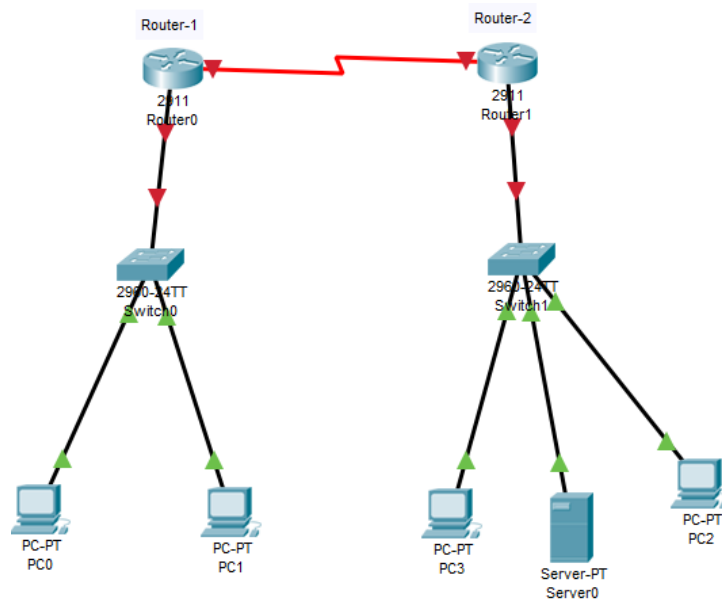
191-16-410

Marks: 25 (15+10 Viva)

Deadline: April 4, 2021

Task-1: Your Company has been given you the network address **114.155.190.0/12**. After careful planning, looking at current needs and expansion, you realized you need some **subnets of 2000 hosts** and some subnets of **126 hosts**.

Task-2: From subnets of 126 hosts, you are requested to use two subnets for Router-1 and Router-2. From reserve, subnets you should again subnet for point-to-point links.



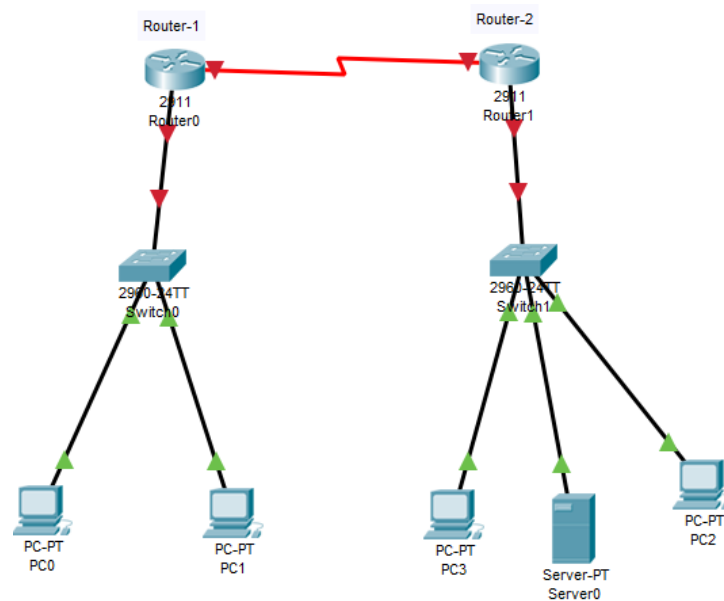
Task-3: Your Routing Protocol is RIPv2

Task-4: Need to configure NAT on Router-1 (Public IP for NAT: 100.100.200.1-100.100.200.4/27)

Daffodil International University
Network Security
Lab Assignment, Section-A
191-16-411
Marks: 25 (15+10 Viva)
Deadline: April 4, 2021

Task-1: Your Company has been given you the network address **141.155.190.0/16**. After careful planning, looking at current needs and expansion, you realized you need some **subnets of 1000 hosts and** some subnets **of 50 hosts**.

Task-2: From subnets of 50 hosts, you are requested to use two subnets for Router-1 and Router-2. From reserve, subnets you should again subnet for point-to-point links.



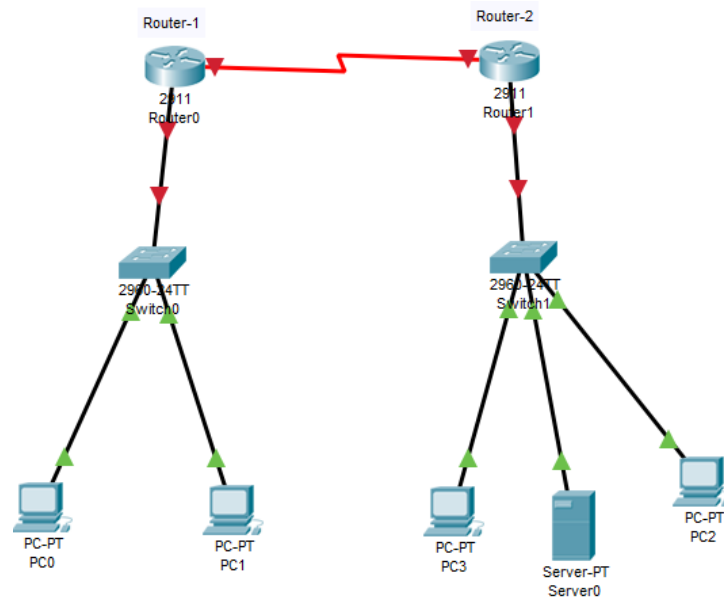
Task-3: Your Routing Protocol is RIPv2

Task-4: Need to configure NAT on Router-1 (Public IP for NAT: 100.100.200.1-100.100.200.4/28)

Daffodil International University
Network Security
Assignment, Section-A
191-16-414
Marks: 25 (15+10 Viva)
Deadline: April 4, 2021

Task-1: Your Company has been given you the network address **141.155.190.0/16**. After careful planning, looking at current needs and expansion, you realized you need some **subnets of 1000 hosts and** some subnets **of 126 hosts**.

Task-2: From subnets of 126 hosts, you are requested to use two subnets for Router-1 and Router-2. From reserve, subnets you should again subnet for point-to-point links.



Task-3: Your Routing Protocol is EIGRP

Task-4: Need to configure NAT on Router-1 (Public IP for NAT: 150.100.200.1-150.100.200.4/28)

Daffodil International University

Network Security

Assignment, Section-A

191-16-415

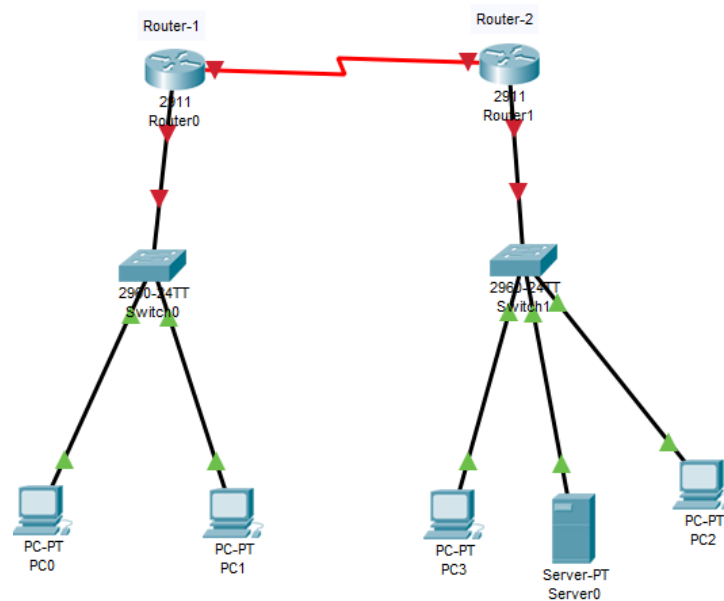
Marks: 25 (15+10 Viva)

Deadline: April 4, 2021

Task-1: Your Company has been given you the network address **170.155.180.0/16**.

After careful planning, looking at current needs and expansion, you realized you need some **subnets of 900 hosts** and some subnets of **150 hosts**.

Task-2: From subnets of 150 hosts, you are requested to use two subnets for Router-1 and Router-2. From reserve, subnets you should again subnet for point-to-point links.



Task-3: Your Routing Protocol is OSPF

Task-4: Need to configure NAT on Router-1 (Public IP for NAT: 100.100.200.1-100.100.200.4/28)

Daffodil International University

Network Security

Lab Assignment, Section-A

191-16-416

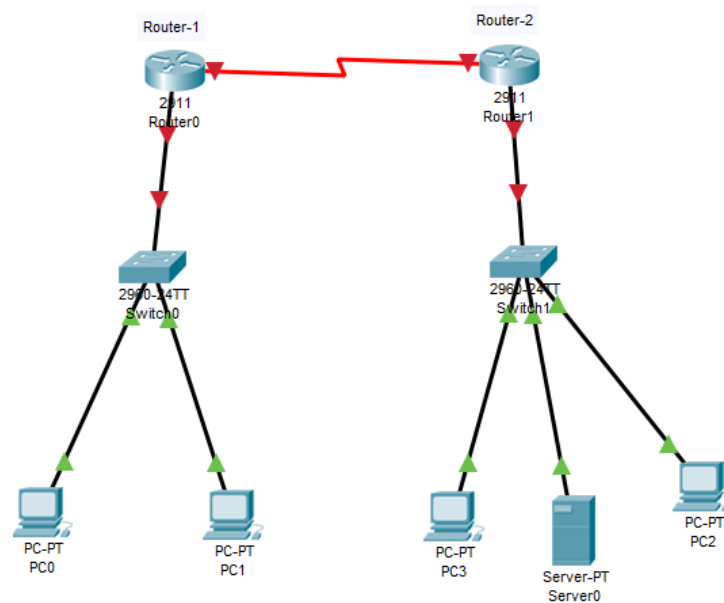
Marks: 25 (15+10 Viva)

Deadline: April 4, 2021

Task-1: Your Company has been given you the network address **180.155.180.0/16**.

After careful planning, looking at current needs and expansion, you realized you need some **subnets of 2000 hosts and** some subnets **of 126 hosts**.

Task-2: From subnets of 126 hosts, you are requested to use two subnets for Router-1 and Router-2. From reserve, subnets you should again subnet for point-to-point links.



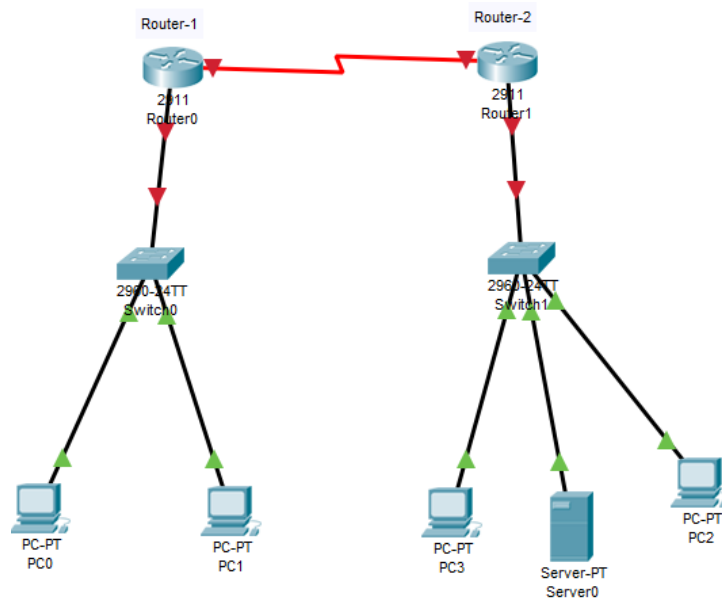
Task-3: Your Routing Protocol is Static Routing

Task-4: Need to configure NAT on Router-1 (Public IP for NAT: 100.100.200.1-100.100.200.4/27)

Daffodil International University
Network Security
Lab Assignment, Section-A
191-16-417
Marks: 25 (15+10 Viva)
Deadline: April 4, 2021

Task-1: Your Company has been given you the network address **191.144.180.0/16**. After careful planning, looking at current needs and expansion, you realized you need some **subnets of 800 hosts** and some subnets **of 252 hosts**.

Task-2: From subnets of 252 hosts, you are requested to use two subnets for Router-1 and Router-2. From reserve, subnets you should again subnet for point-to-point links.



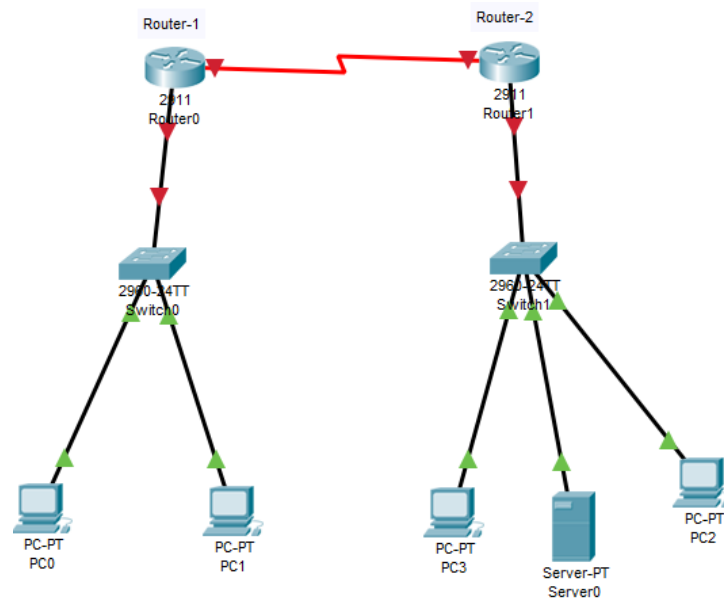
Task-3: Your Routing Protocol is EIGRP

Task-4: Need to configure NAT on Router-1 (Public IP for NAT: 100.100.200.1-100.100.200.4/28)

Daffodil International University
Network Security
Lab Assignment, Section-A
191-16-418
Marks: 25 (15+10 Viva)
Deadline: April 4, 2021

Task-1: Your Company has been given you the network address **171.144.180.0/16**. After careful planning, looking at current needs and expansion, you realized you need some **subnets of 450 hosts** and some subnets of **126 hosts**.

Task-2: From subnets of 126 hosts, you are requested to use two subnets for Router-1 and Router-2. From reserve, subnets you should again subnet for point-to-point links.



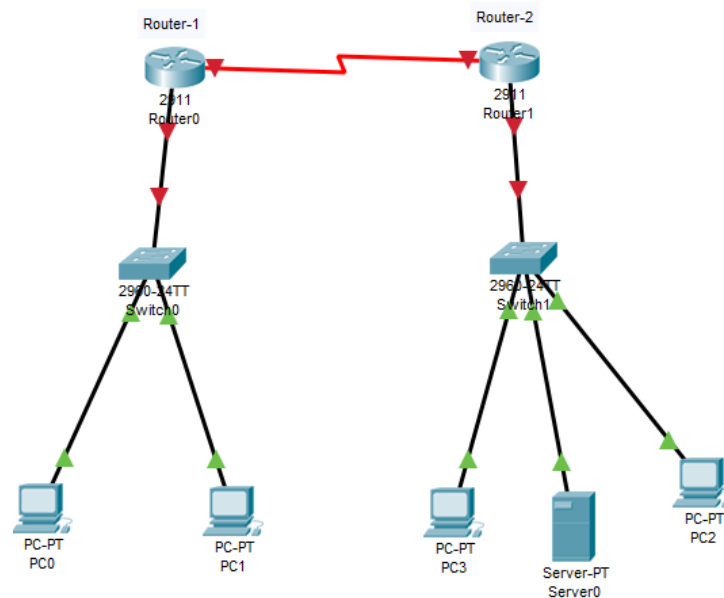
Task-3: Your Routing Protocol is RIPv2

Task-4: Need to configure NAT on Router-1 (Public IP for NAT: 100.100.200.1-100.100.200.2/30)

Daffodil International University
Network Security
Lab Assignment, Section-A
191-16-420
Marks: 25 (15+10 Viva)
Deadline: April 4, 2021

Task-1: Your Company has been given you the network address **126.140.170.0/8**. After careful planning, looking at current needs and expansion, you realized you some **subnets of 4000 hosts and** some subnets **of 510 hosts**.

Task-2: From subnets of 510 hosts, you are requested to use two subnets for Router-1 and Router-2. From reserve, subnets you should again subnet **for point-to-point links**.



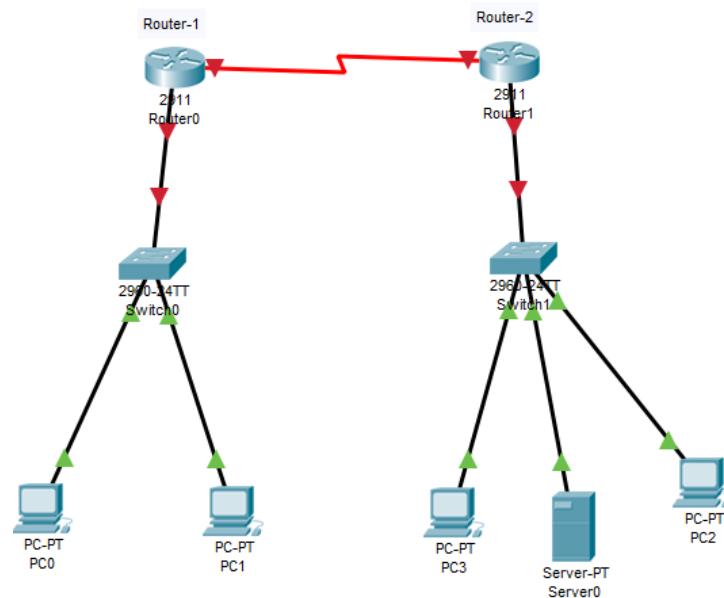
Task-3: Your Routing Protocol is OSPF

Task-4: Need to configure NAT on Router-1 (Public IP for NAT: 100.100.200.1-100.100.200.4/28)

Daffodil International University
Network Security
Lab Assignment, Section-A
191-16-421
Marks: 25 (15+10 Viva)
Deadline: April 4, 2021

Task-1: Your Company has been given you the network address **125.130.160.0/8**. After careful planning, looking at current needs and expansion, you realized you need some **subnets of 5000 hosts**; some subnets of **300 hosts**.

Task-2: From subnets of 300 hosts, you are requested to use two subnets for Router-1 and Router-2. From reserve, subnets you should again subnet for point-to-point links.



Task-3: Your Routing Protocol is RIPv2

Task-4: Need to configure NAT on Router-1 (Public IP for NAT: 210.100.200.1-210.100.200.4/28)

Daffodil International University

Network Security

Lab Assignment, Section-A

191-16-422

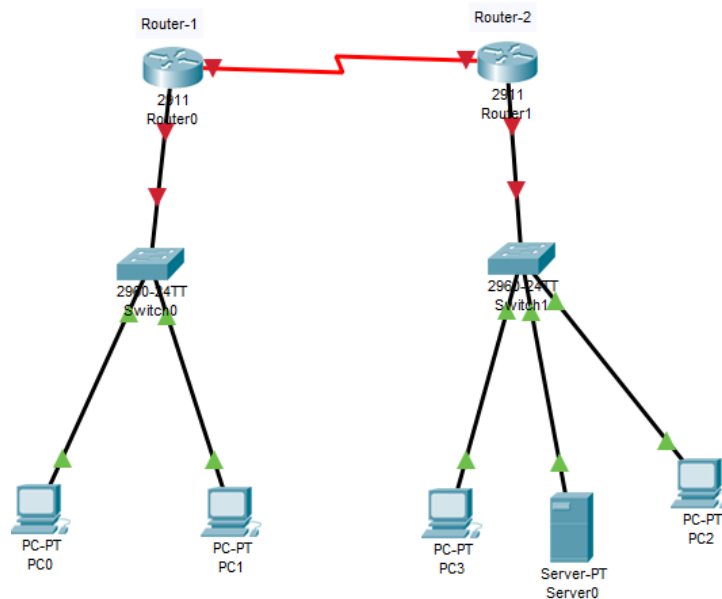
Marks: 25 (15+10 Viva)

Deadline: April 4, 2021

Task-1: Your Company has been given you the network address **125.130.160.0/8**.

After careful planning, looking at current needs and expansion, you realized you need some **subnets of 3500 hosts and** some subnets **of 250 hosts**.

Task-2: From subnets of 250 hosts, you are requested to use two subnets for Router-1 and Router-2. From reserve, subnets you should again subnet for point-to-point links.



Task-3: Your Routing Protocol is OSPF

Task-4: Need to configure NAT on Router-1 (Public IP for NAT: 100.100.200.1-100.100.200.4/28)

Daffodil International University

Network Security

Lab Assignment, Section-A

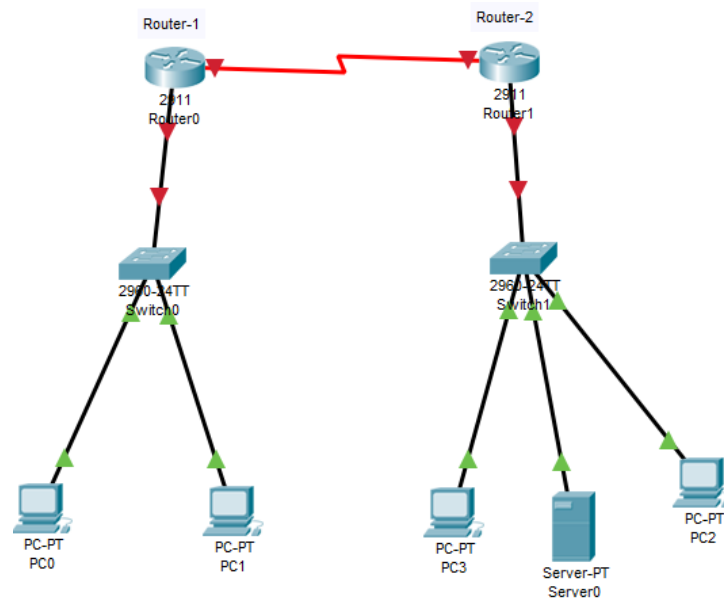
191-16-423

Marks: 25 (15+10 Viva)

Deadline: April 4, 2021

Task-1: Your Company has been given you the network address **129.130.150.0/16**. After careful planning, looking at current needs and expansion, you realized you need some **subnets of 2000 hosts and** some subnets **of 500 hosts**.

Task-2: From subnets of 500 hosts, you are requested to use two subnets for Router-1 and Router-2. From reserve, subnets you should again subnet for point-to-point links.



Task-3: Your Routing Protocol is OSPF

Task-4: Need to configure NAT on Router-1 (Public IP for NAT: 100.100.200.1-100.100.200.4/28)

Daffodil International University

Network Security

Assignment, Section-A

191-16-424

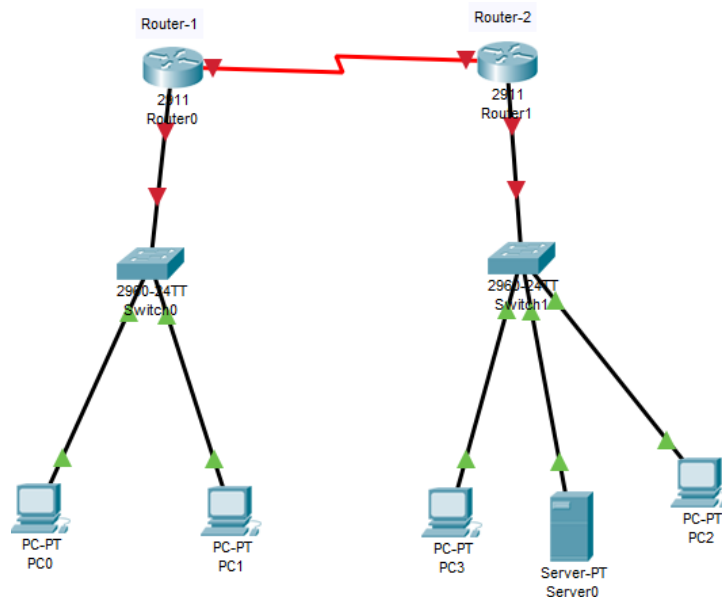
Marks: 25 (15+10 Viva)

Deadline: April 4, 2021

Task-1: Your Company has been given you the network address **120.130.140.0/16**.

After careful planning, looking at current needs and expansion, you realized you need some **subnets of 1000 hosts and** some subnets **of 300 hosts**.

Task-2: From subnets of 300 hosts, you are requested to use two subnets for Router-1 and Router-2. From reserve, subnets you should again subnet for point-to-point links.



Task-3: Your Routing Protocol is OSPF

Task-4: Need to configure PAT on Router-1 (Public IP for PAT: 100.100.200.1-100.100.200.2/30)

Daffodil International University

Network Security

Lab Assignment, Section-A

191-16-425

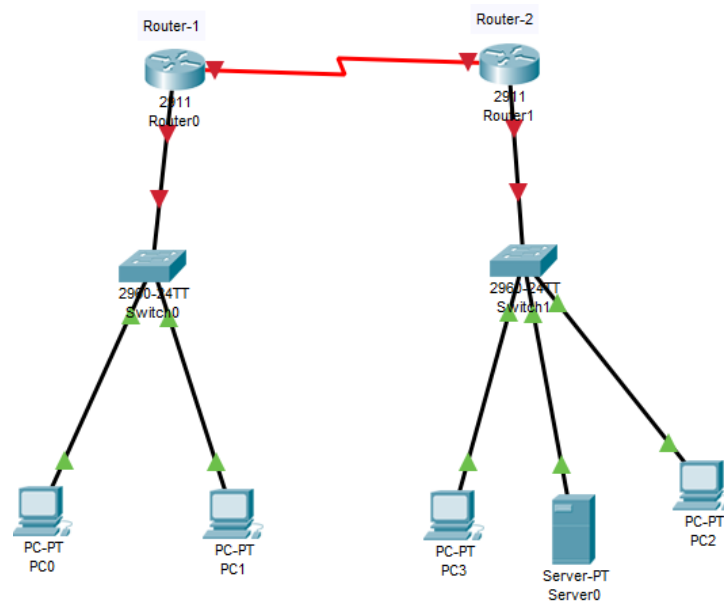
Marks: 25 (15+10 Viva)

Deadline: April 4, 2021

Task-1: Your Company has been given you the network address **130.140.150.0/17**.

After careful planning, looking at current needs and expansion, you realized you need some **subnets of 1000 hosts and** some subnets **of 130 hosts**.

Task-2: From subnets of 130 hosts, you are requested to use two subnets for Router-1 and Router-2. From reserve, subnets you should again subnet for point-to-point links.



Task-3: Your Routing Protocol is OSPF

Task-4: Need to configure NAT on Router-1 (Public IP for NAT: 100.100.200.1-100.100.200.4/28)

Daffodil International University

Network Security

Assignment, Section-A

191-16-432

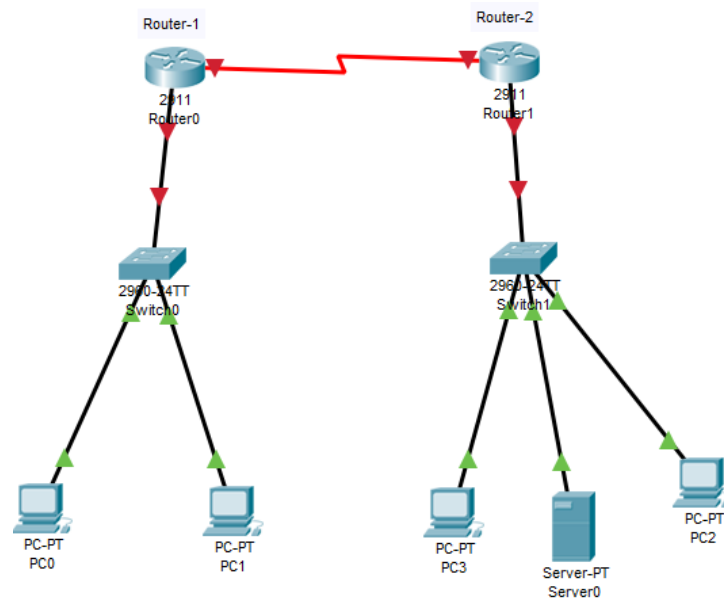
Marks: 25 (15+10 Viva)

Deadline: April 4, 2021

Task-1: Your Company has been given you the network address **113.130.140.0/10**.

After careful planning, looking at current needs and expansion, you realized you need some **subnets of 4050 hosts and** some subnets of **500 hosts**.

Task-2: From subnets of 500 hosts, you are requested to use two subnets for Router-1 and Router-2. From reserve, subnets you should again subnet for point-to-point links.



Task-3: Your Routing Protocol is OSPF

Task-4: Need to configure NAT on Router-1 (Public IP for NAT: 100.100.200.1-100.100.200.4/28)

Daffodil International University

Network Security

Lab Assignment, Section-A

191-16-433

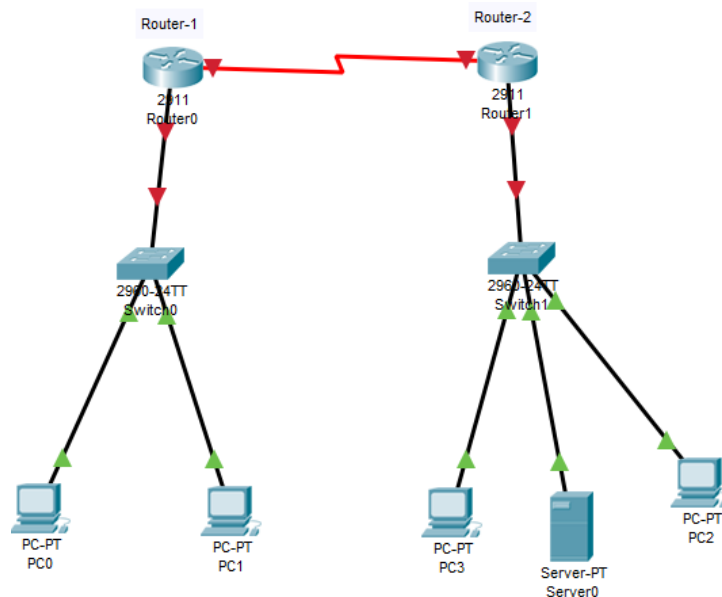
Marks: 25 (15+10 Viva)

Deadline: April 4, 2021

Task-1: Your Company has been given you the network address **115.130.140.0/9**.

After careful planning, looking at current needs and expansion, you realized you need some **subnets of 5000 hosts and** some subnets **of 500 hosts**.

Task-2: From subnets of 500 hosts, you are requested to use two subnets for Router-1 and Router-2. From reserve, subnets you should again subnet for point-to-point links.



Task-3: Your Routing Protocol is RIPv2

Task-4: Need to configure NAT on Router-1 (Public IP for NAT: 100.100.200.1-100.100.200.4/29)

Daffodil International University

Network Security

Lab Assignment, Section-A

191-16-435

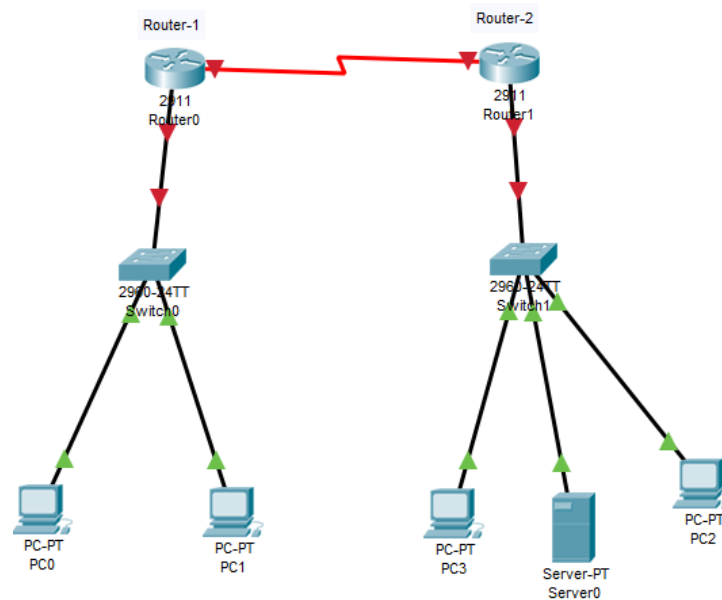
Marks: 25 (15+10 Viva)

Deadline: April 4, 2021

Task-1: Your Company has been given you the network address **122.130.140.0/8**.

After careful planning, looking at current needs and expansion, you realized you need a maximum of **three subnets of 5050 hosts and** some subnets **of 510 hosts**.

Task-2: From subnets of 510 hosts, you are requested to use two subnets for Router-1 and Router-2. From reserve, subnets you should again subnet for point-to-point links.



Task-3: Your Routing Protocol is OSPF

Task-4: Need to configure NAT on Router-1 (Public IP for NAT: 100.100.200.1-100.100.200.4/29)

Daffodil International University

Network Security

Assignment, Section-A

191-16-436

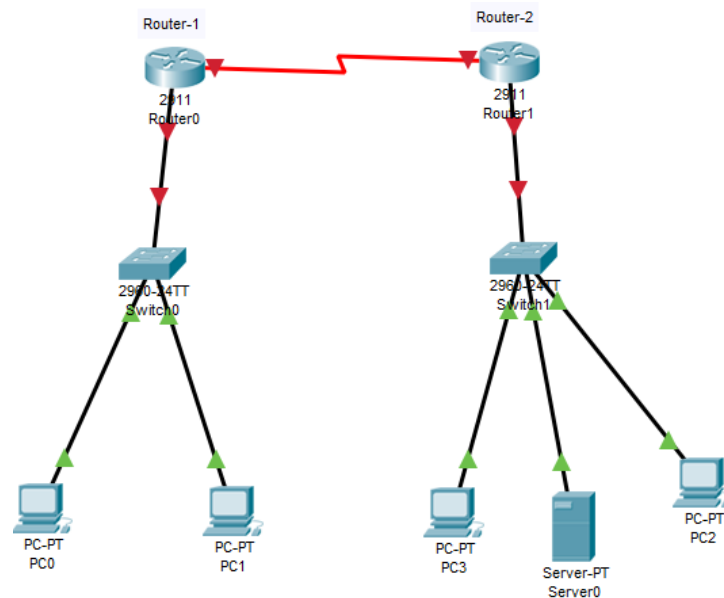
Marks: 25 (15+10 Viva)

Deadline: April 4, 2021

Task-1: Your Company has been given you the network address **132.130.140.0/16**.

After careful planning, looking at current needs and expansion, you realized you need some **subnets of 3000 hosts and** some subnets **of 250 hosts**.

Task-2: From subnets of 250 hosts, you are requested to use two subnets for Router-1 and Router-2. From reserve, subnets you should again subnet for point-to-point links.



Task-3: Your Routing Protocol is Static Routing

Task-4: Need to configure NAT on Router-1 (Public IP for NAT: 100.100.200.1-100.100.200.4/29)

Daffodil International University

Network Security

Lab Assignment, Section-A

191-16-439

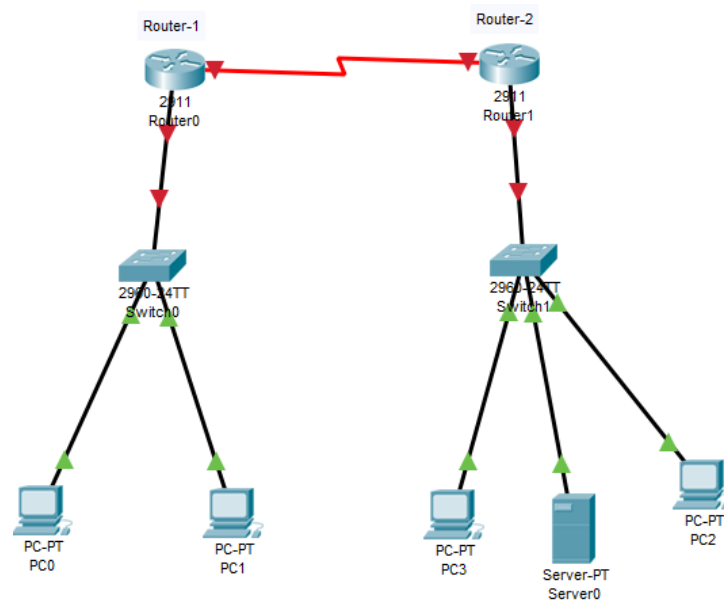
Marks: 25 (15+10 Viva)

Deadline: April 4, 2021

Task-1: Your Company has been given you the network address **134.130.140.0/16**.

After careful planning, looking at current needs and expansion, you realized you need a maximum of **three subnets of 4000 hosts and** some subnets of **500 hosts**.

Task-2: From subnets of 500 hosts, you are requested to use two subnets for Router-1 and Router-2. From reserve, subnets you should again subnet for point-to-point links.



Task-3: Your Routing Protocol is Static Routing

Task-4: Need to configure NAT on Router-1 (Public IP for NAT: 210.100.200.1-210.100.200.4/29)

Daffodil International University

Network Security

Lab Assignment, Section-A

191-16-440

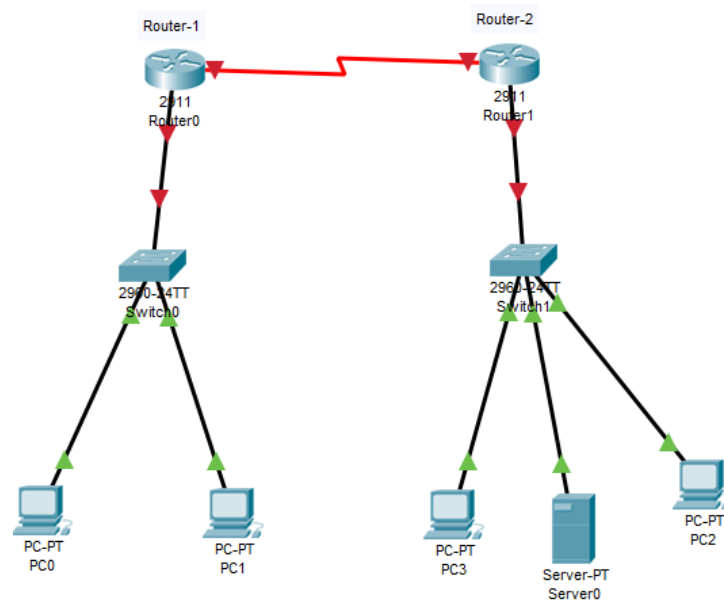
Marks: 25 (15+10 Viva)

Deadline: April 4, 2021

Task-1: Your Company has been given you the network address **123.120.130.0/10**.

After careful planning, looking at current needs and expansion, you realized you need a maximum of **three subnets of 3050 hosts and** some subnets of **200 hosts**.

Task-2: From subnets of 200 hosts, you are requested to use two subnets for Router-1 and Router-2. From reserve, subnets you should again subnet for point-to-point links.



Task-3: Your Routing Protocol is OSPF

Task-4: Need to configure NAT on Router-1 (Public IP for NAT: 100.100.200.1-100.100.200.4/29)

Daffodil International University

Network Security

Lab Assignment, Section-A

191-16-442

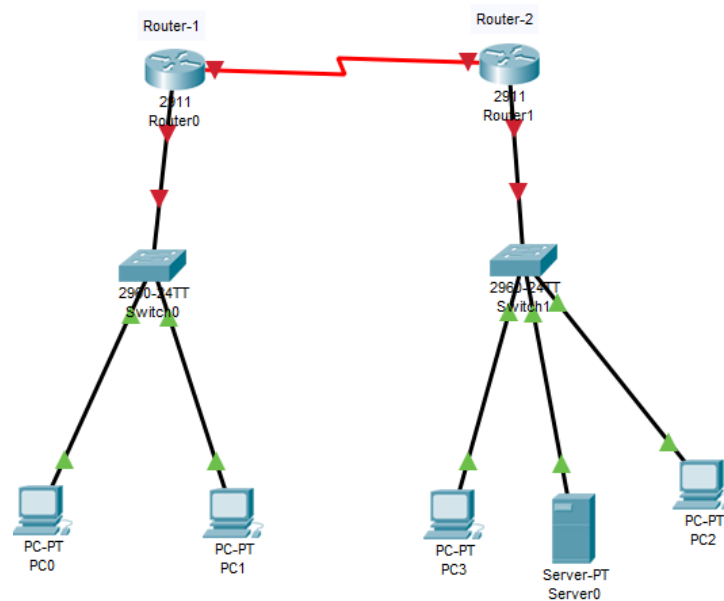
Marks: 25 (15+10 Viva)

Deadline: April 4, 2021

Task-1: Your Company has been given you the network address **115.130.140.0/8**.

After careful planning, looking at current needs and expansion, you realized you need a maximum of **three subnets of 6000 hosts and** some subnets of **500 hosts**.

Task-2: From subnets of 500 hosts, you are requested to use two subnets for Router-1 and Router-2. From reserve, subnets you should again subnet for point-to-point links.



Task-3: Your Routing Protocol is OSPF

Task-4: Need to configure NAT on Router-1 (Public IP for NAT: 100.100.200.1-100.100.200.4/29)

Daffodil International University

Network Security

Lab Assignment, Section-A

191-16-443

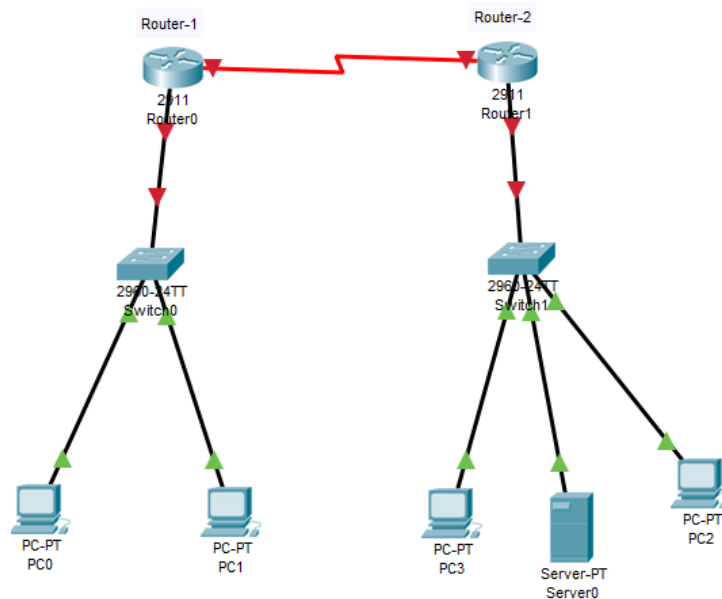
Marks: 25 (15+10 Viva)

Deadline: April 4, 2021

Task-1: Your Company has been given you the network address **145.120.130.0/16**.

After careful planning, looking at current needs and expansion, you realized you need a maximum of **three subnets of 4000 hosts and** some subnets **of 300 hosts**.

Task-2: From subnets of 300 hosts, you are requested to use two subnets for Router-1 and Router-2. From reserve, subnets you should again subnet for point-to-point links.



Task-3: Your Routing Protocol is RIPv2

Task-4: Need to configure NAT on Router-1 (Public IP for NAT: 110.100.200.1-110.100.200.4/29)